



GU70 SPECIAL



GU70 SPECIAL

MODELS:

GU70 SPECIAL FULL ELECTRIC

GU70 SPECIAL HYBRID (DIESEL+ELECTRIC)



**«A BRAND NEW CONCEPT
IN UNDERGROUND CHAIN SAW MACHINES»**

**full-section tunnel with only one positioning
most powerful ever underground chain saw machine
modular size reduction systems for space requirements**



GU70 SPECIAL - FULL ELECTRIC MODEL



100% ELECTRIC MACHINE
MOST OF THE MOVEMENTS AND ALL THE CUTTING UTILITIES
AS CHAIN ROTATION, ARM ROTATION, TRANSLATION ARE POWERED BY ONLY ELECTRIC MOTORS

HIGHER WORKING SPEED, STRONGEST TORQUE AND QUIETNESS

GU70 SPECIAL - **HYBRID MODEL**



HYBRID MACHINE
THIS VERSION IS ALSO EQUIPPED WITH A DIESEL ENGINE
THAT ALLOWS THE MACHINE TO MOVE BY ITSELF WITH TRACKS

TRAVEL FOR BIG DISTANCES, NO NEED OF ELECTRIC CABLES OR POWER GENERATORS

OVERVIEW

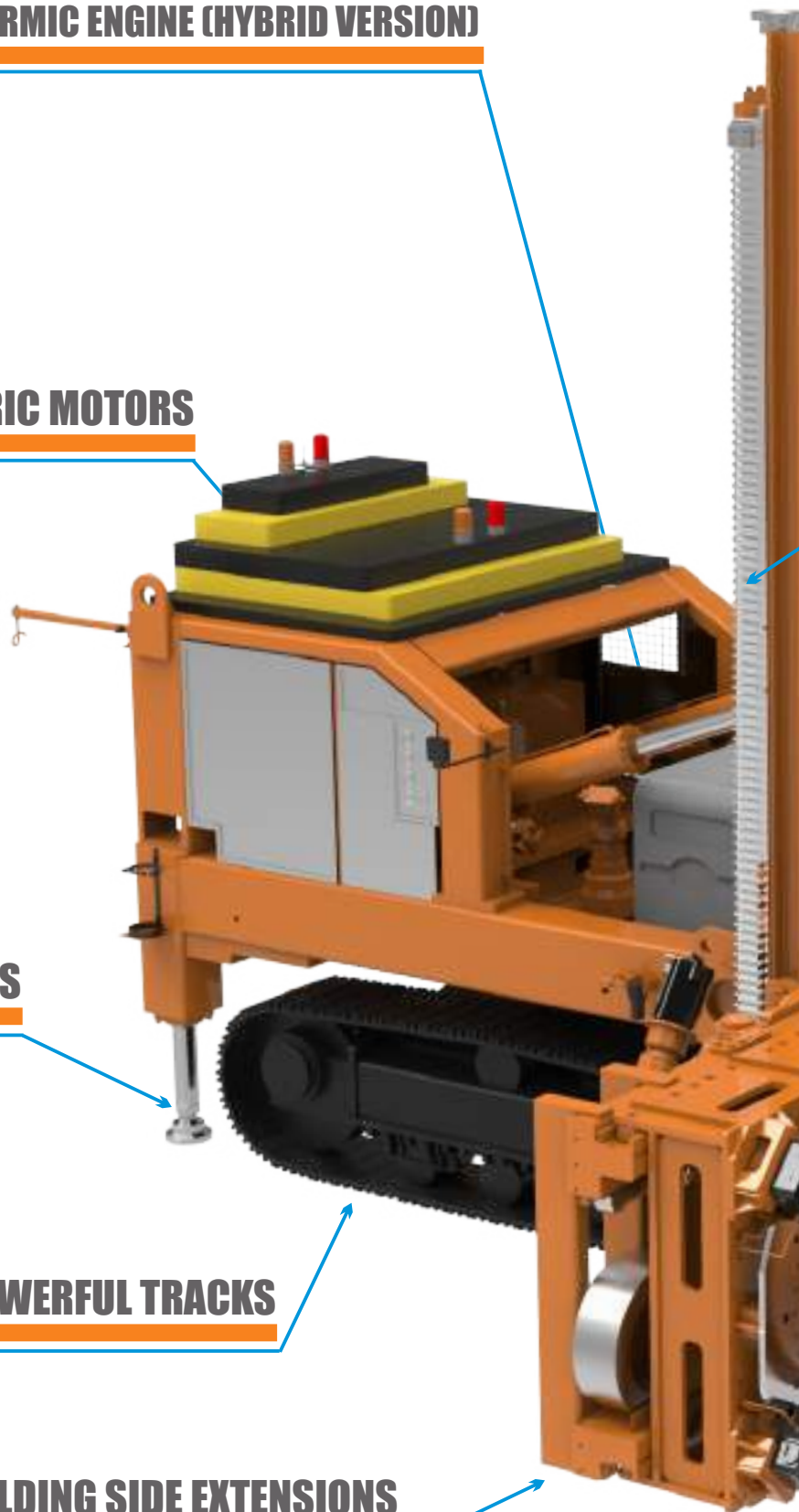
ENDOTHERMIC ENGINE (HYBRID VERSION)

VERTICAL TRAVEL ELECTRIC MOTORS

REINFORCED STABILIZERS

BIGGER AND POWERFUL TRACKS

FOLDING SIDE EXTENSIONS



STREIGHTENED FRAME

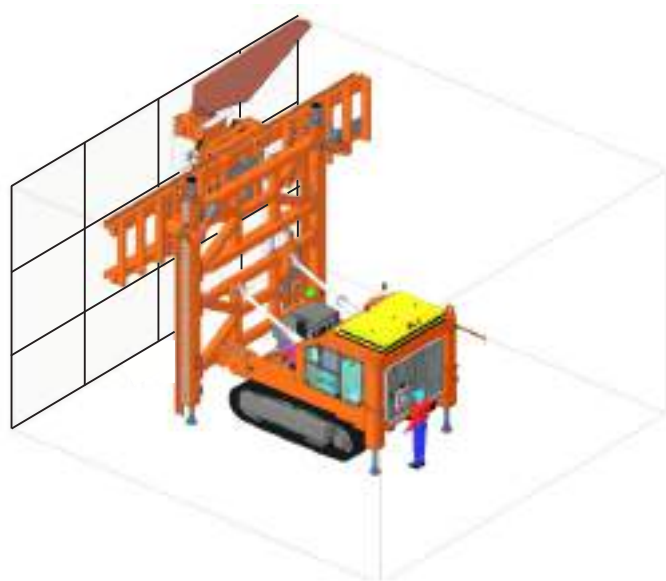
DOUBLE RACK AND PINIONS SYSTEM

DISC BRAKES FOR HEAD LOCKING

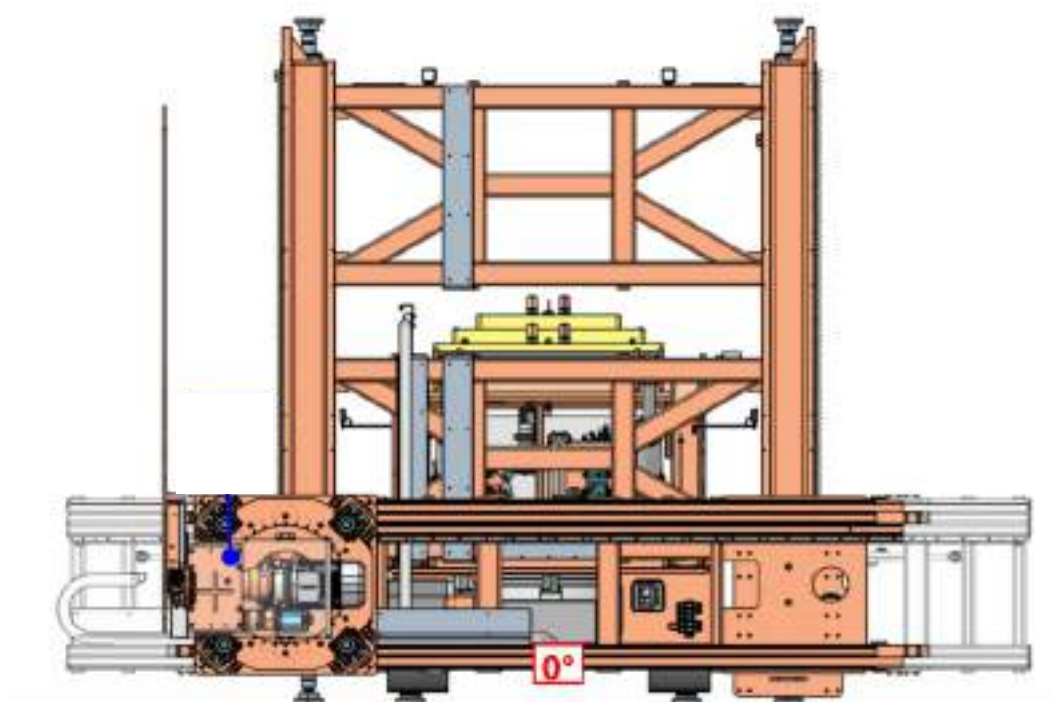
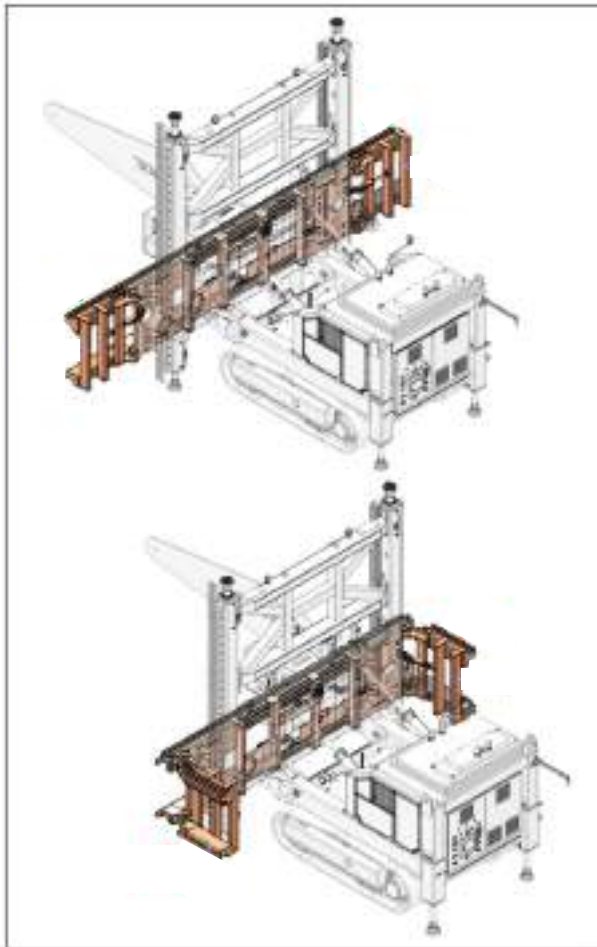
SELF-ROTATING HEAD CONCEPT

CHAIN ELECTRIC MOTOR

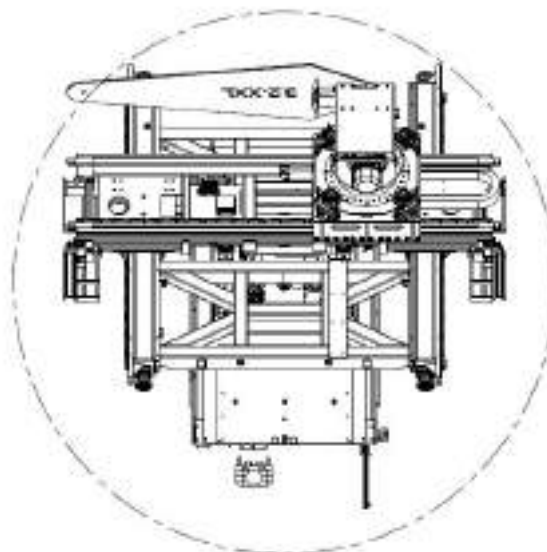
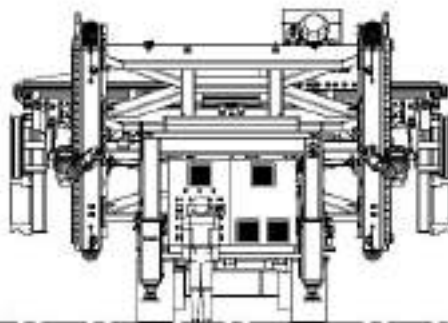
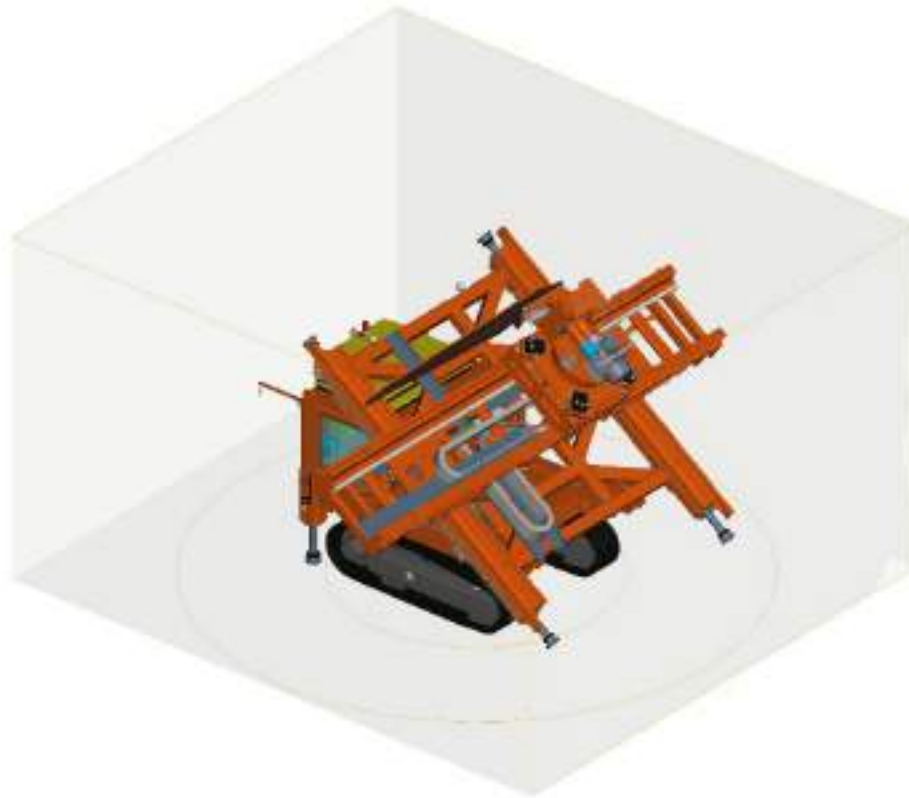
FULL-SECTION TUNNEL WITH ONLY ONE POSITIONING



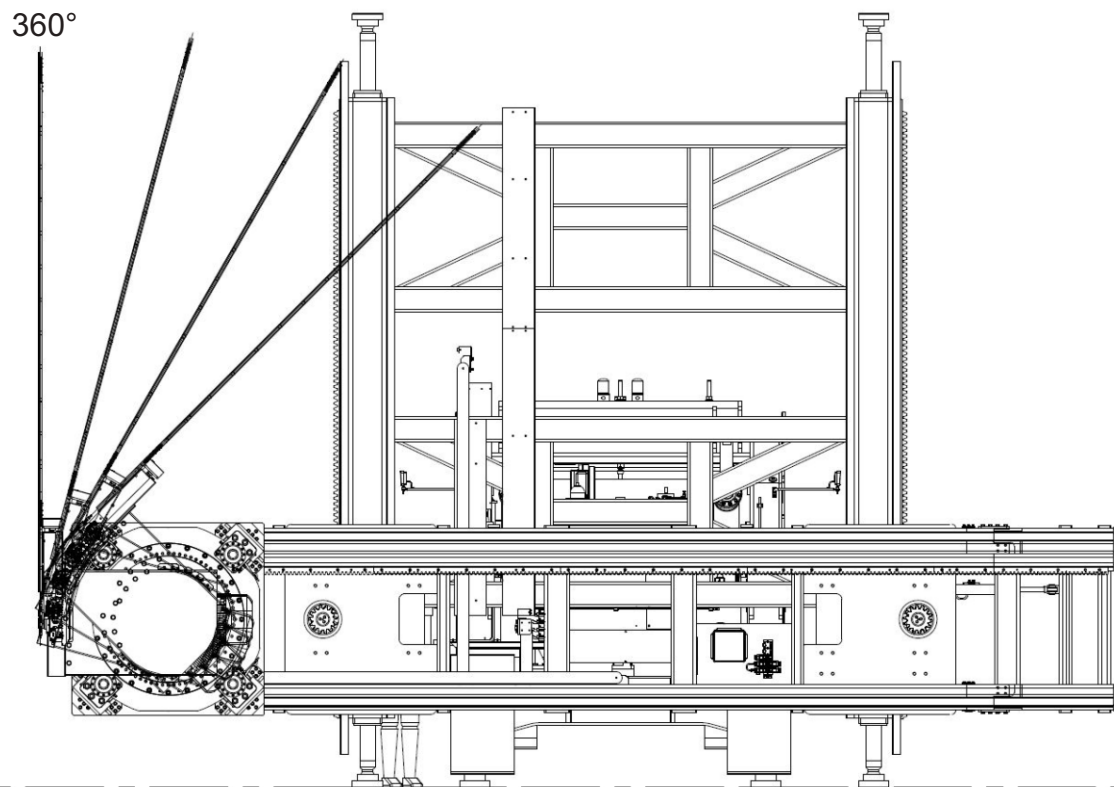
SIDE WINGS (EXTENSIONS) FOR IN-TUNNEL SIZE REDUCTION



STOWED CONFIGURATION FOR IN-TUNNEL ROTATION AND TRAVELING



HEAD ROTATION'S NEW CONCEPT



THE HEAD, IN THIS NEW CONCEPT, IS FIXED ON A COMPACT TROLLEY WHICH ENCLOSES THE SLIDING SYSTEM AND THE HEAD'S FIFTH WHEEL, ITS POSITION IS LOCKED IN A FULLY AUTOMATIC WAY, BY A BIG DISC BRAKE WITH 4 CALIPERS ,



FIXING BY THE OPERATOR THE MECHANICAL LOCKS (6 BOLTS) ARE NO LONGER NEEDED

TIME SAVING/INCREASE SAFETY

IT CAN TURN 360° IN ANY POSITION, WITHOUT INTERLOCKS

SPEED-UP THE PROCESS

NOW, IT TURNS ONLY THE HEAD, LIGHTEN THE LOAD ON THE FRAME

LESS STRESS FOR THE FRAME AND GEARBOXES

AUTOMATIC CUT AND REMOTE CONTROL



THE GU 70 SPECIAL IS MANAGED BY A SINGLE OPERATOR
THE COLOR DISPLAY RIGHT ON THE BACK, SHOWS YOU A WIDE RANGE OF SETTINGS AND PARAMETERS.
THE AUTOMATIC CUT ALLOWS THE OPERATOR, ONCE THE PARAMETERS HAVE BEEN SET,
TO PERFORM IT IN A TOTALLY AUTOMATIC WAY,
FROM THE BEGINNING TO THE END.



BEING REMOTELY CONTROLLED, THE OPERATOR IT IS POSITIONED WHERE IT IS MOST APPROPRIATE, HAVING CLEAR VISIBILITY AND INCREASED SAFETY. ON THE REMOTE CONTROL YOU'LL FIND A DISPLAY THAT SHOWS THE USER REAL TIME ALL THE MOST IMPORTANT CUT PARAMETERS, ALLOWING HIM TO EASILY MANAGE AND ADJUST THE MACHINE IN EVERY MOMENT.

STRUCTURAL AND MECHANICAL IMPROVEMENTS



BEING ENGINEERED TO PERFORM A COMPLETE TUNNEL ADVANCEMENT WITH ONLY ONE POSITIONING, THE FRAME HAS BEEN STRENGTHENED

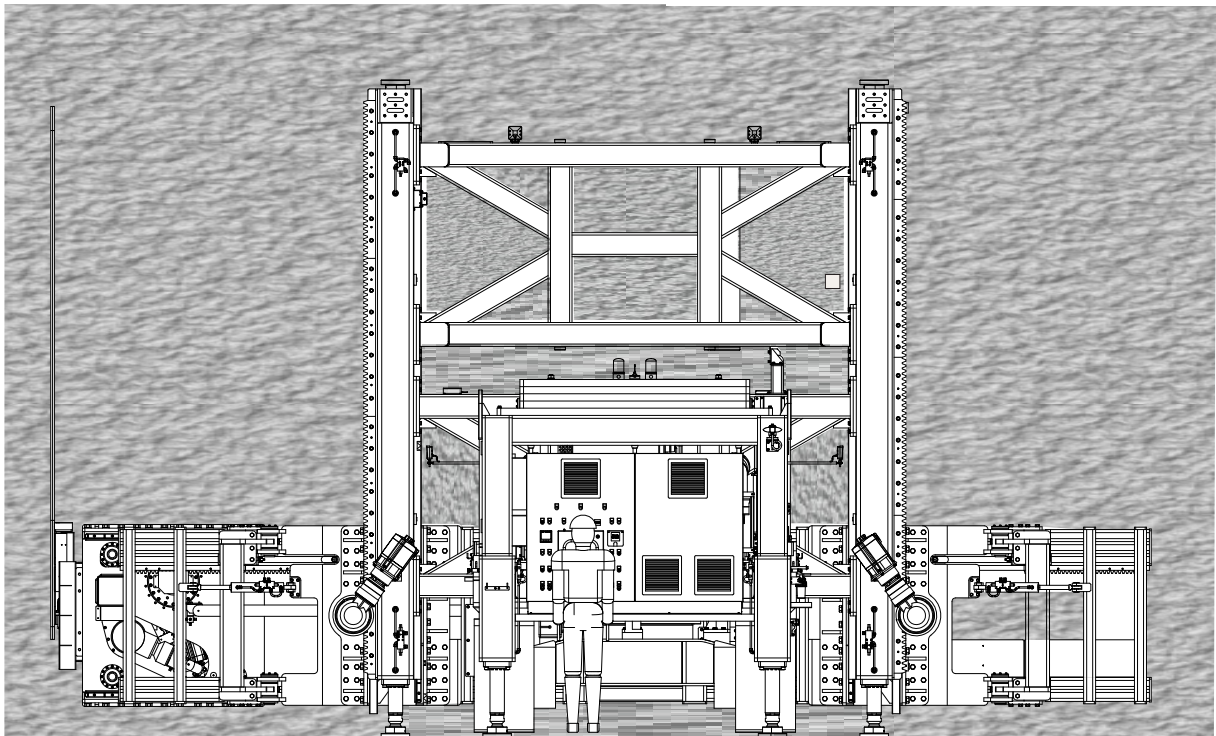
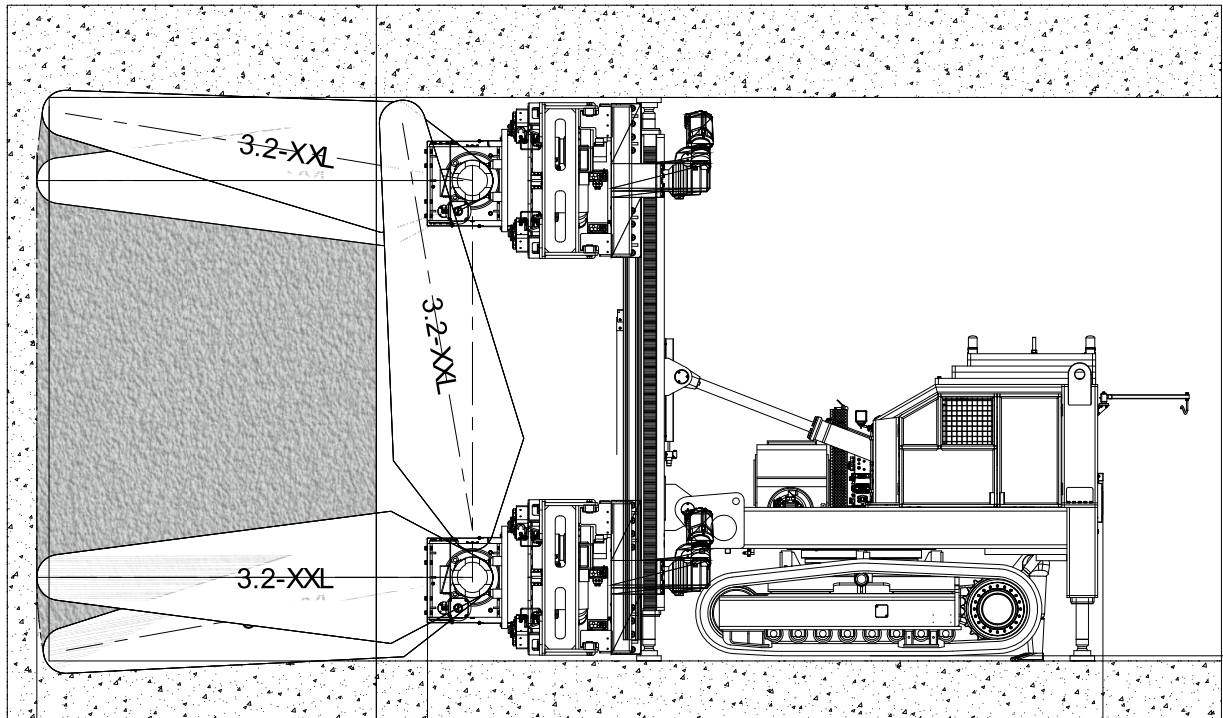
- BRACES ELEMENTS AND SIDE MEMBERS HAVE BEEN ADDED
 - THE STABILIZERS/CEILING PILLARS ARE 20% BIGGER
 - THE CRAWLER UNDERCARRIAGE IS BIGGER AND WIDER

THE HORIZONTAL RAIL UP/DOWN IS ALLOWED BY NOT ONE BUT TWO RACKS-AND-PINIONS IN ORDER TO MAKE THE SLIDING MOVEMENT AS PRECISE AS POSSIBLE.

THE COUPLING MAST/HORIZONTAL RAIL STIFFNESS ALLOWS A PERFECT CUT COMPLANARITY WHEN WORKING

EVERY FRAME COMPONENT HAS BEEN ENGINEERED FOR MAKING THE GU70 SPECIAL THE STRONGEST UNDERGROUND MACHINE EVER BUILT

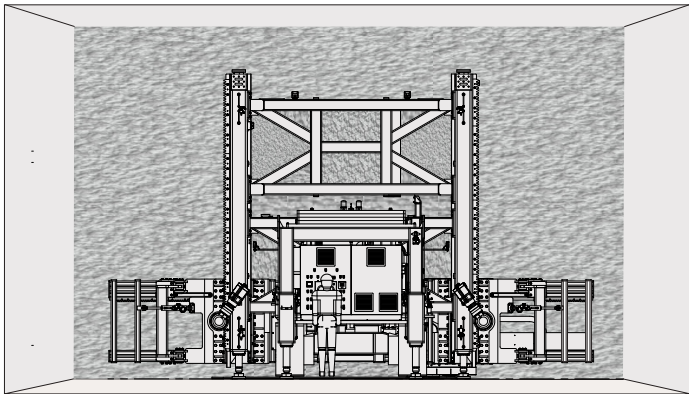
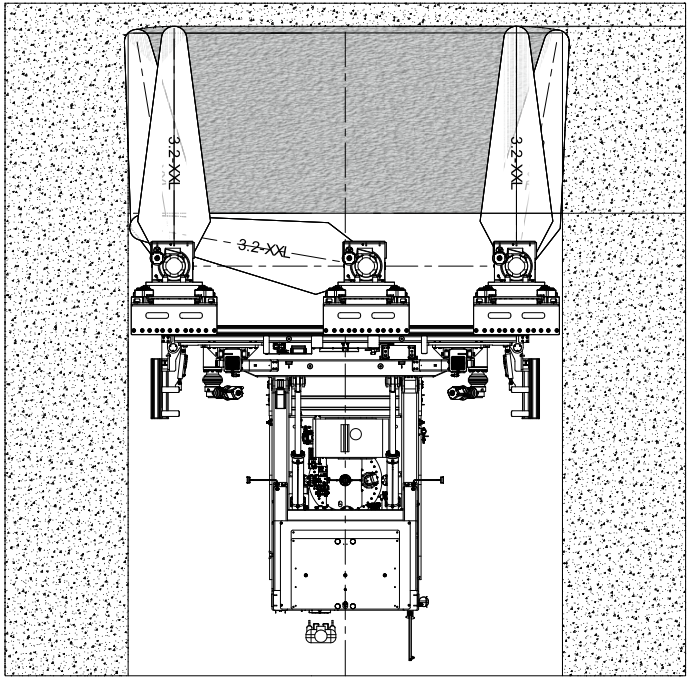
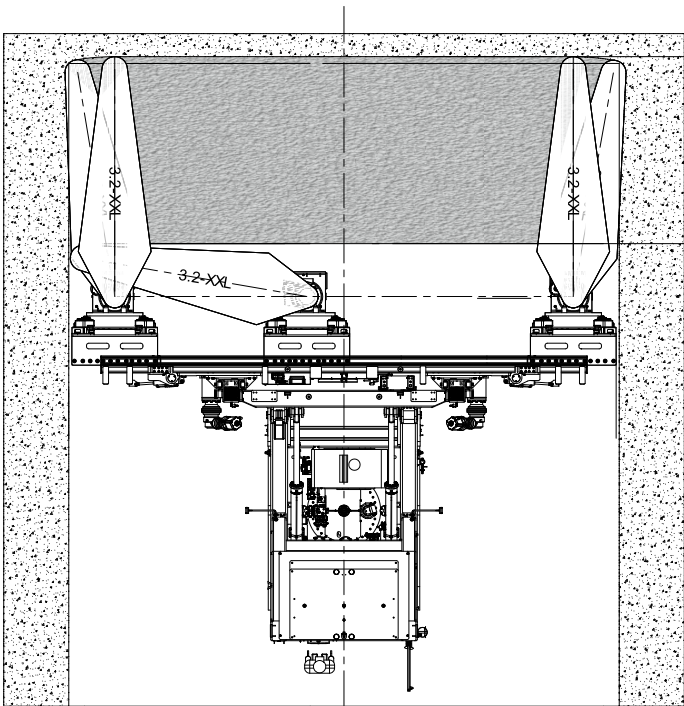
IN-TUNNEL VERTICAL CUT SIMULATION:



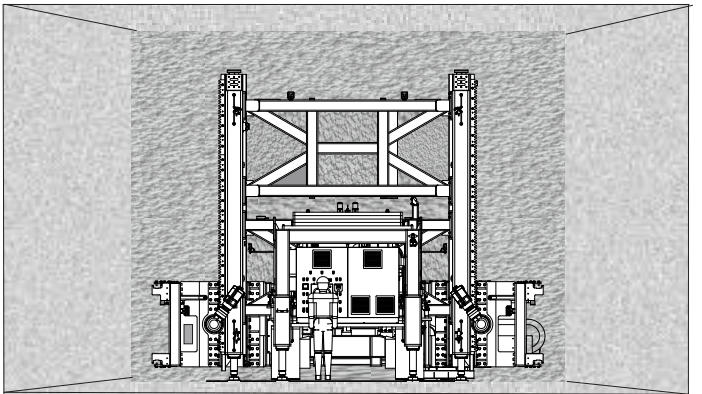
VERTICAL CUT:



HORIZONTAL CUT SIMULATION:



SIDE EXTENSIONS EXTENDED

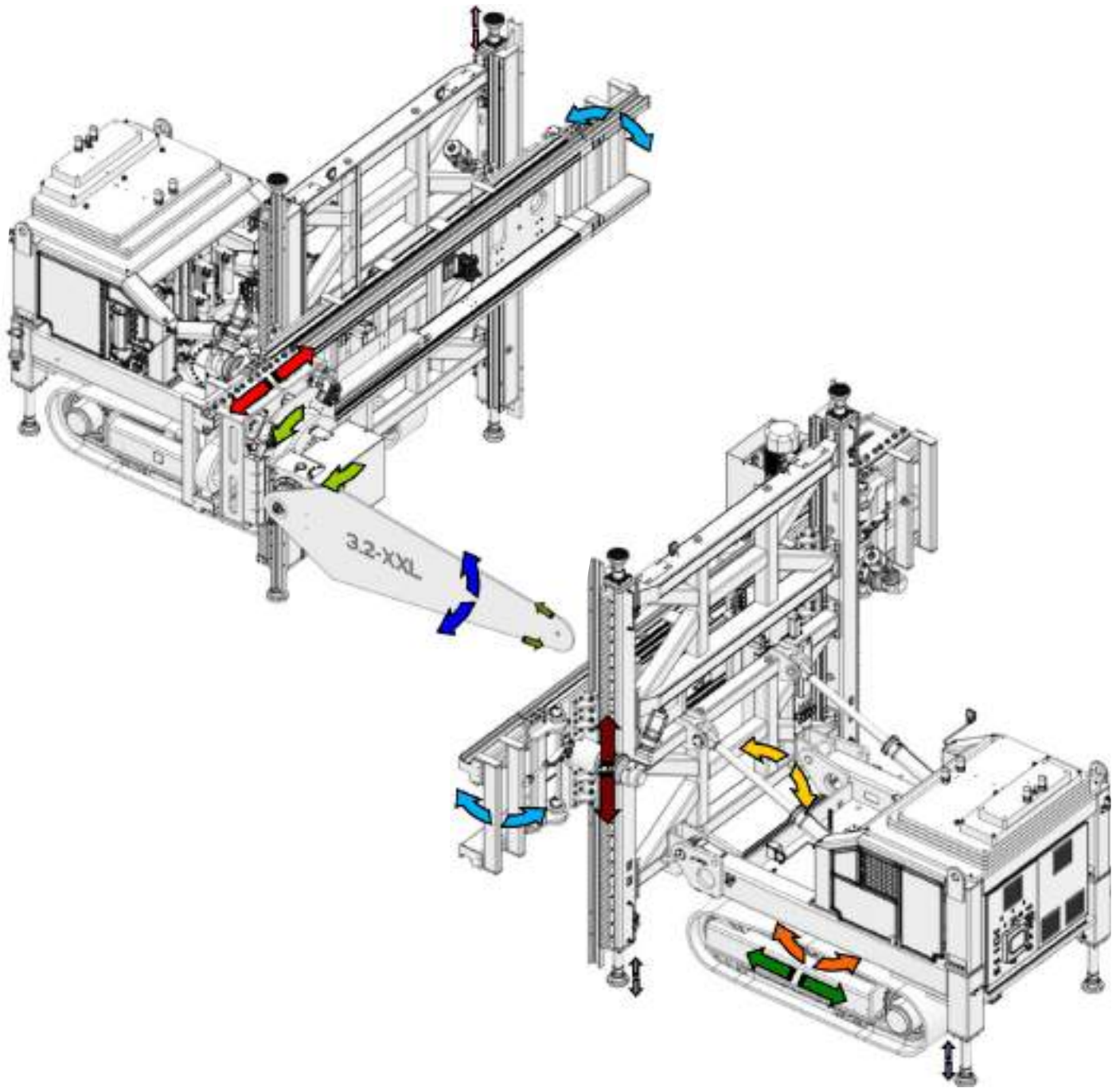


SIDE EXTENSIONS RETRACTED

HORIZONTAL CUT:



MAIN MOVEMENTS

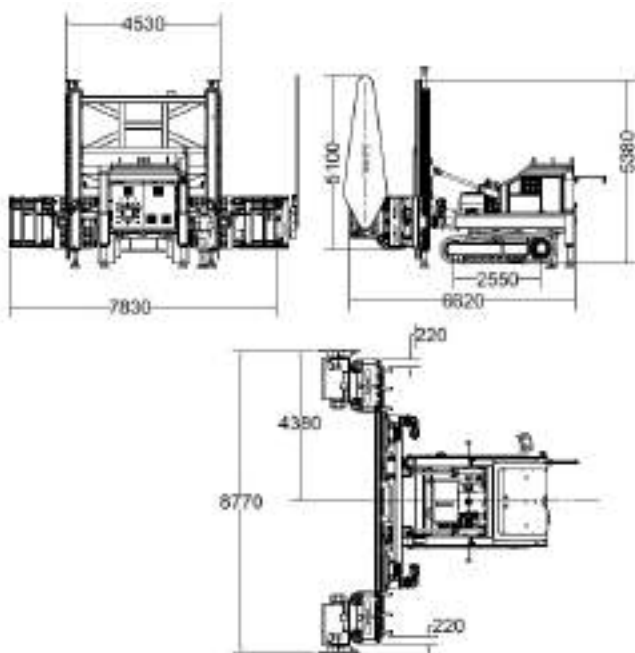


- STRUT OVERTURNING ■
- HEAD UNIT ROTATION ■
- CHAIN ROTATION ■
- VERTICAL CARRIAGE TRANSLATION ■
- TRACKS MOVEMENTS ■
- ARM ROTATION ■
- TRACK ROTATION ■
- OPENING/CLOSING SIDE EXTENSIONS ■
- FRONT STABILIZERS ■
- REAR STABILIZERS ■
- STRUTS ■

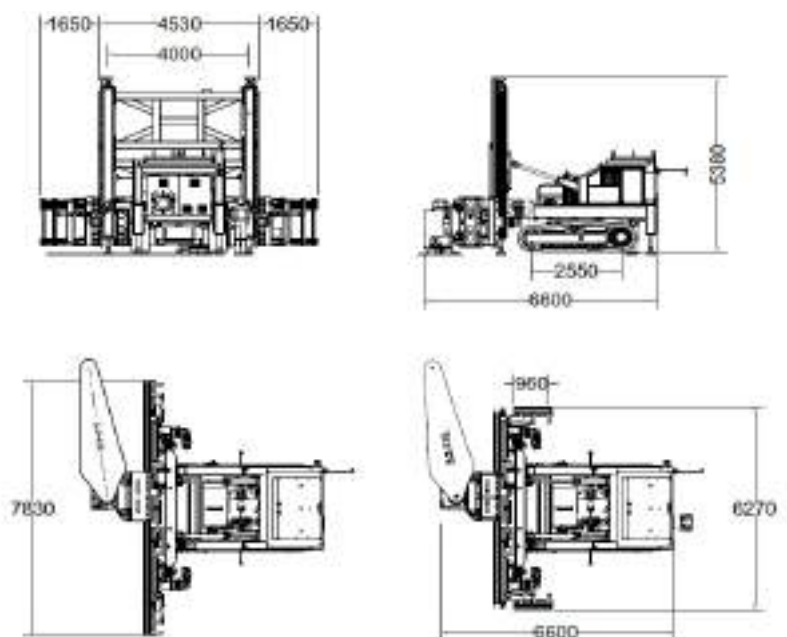
TECHNICAL SPECIFICATION/MACHINE DIMENSIONS:

MAIN POWER SUPPLY	400 VOLTS 50 HZ 3-PHASE
HYDRAULIC OIL TANK CAPACITY	300 LITRES
GREASE TANK CAPACITY	20 KG
ARM ROTATION	360°
ROTATION OF CUTTING UNIT	0°÷328°
TRACKS FIFTH WHEEL ROTATION	360°
STRUT ORIENTATION	32°÷90°
HORIZONTAL CARRIAGE STROKE	~7.200 MM (WITH OPEN EXTENSIONS) ~5.400 MM (WITH CLOSED EXTENSIONS)
VERTICAL CARRIAGE STROKE	3.900 MM
USEFUL CUT DEPTH	~3,2 M (WITH ARM 3.2 XXL)
CUT WIDTH	38MM
WEIGHTED ACOUSTIC POWER LEVEL A	97 DB(A)
TOTAL WEIGHT OF MACHINE	~47.000 KG

VERTICAL CUT CONFIGURATION

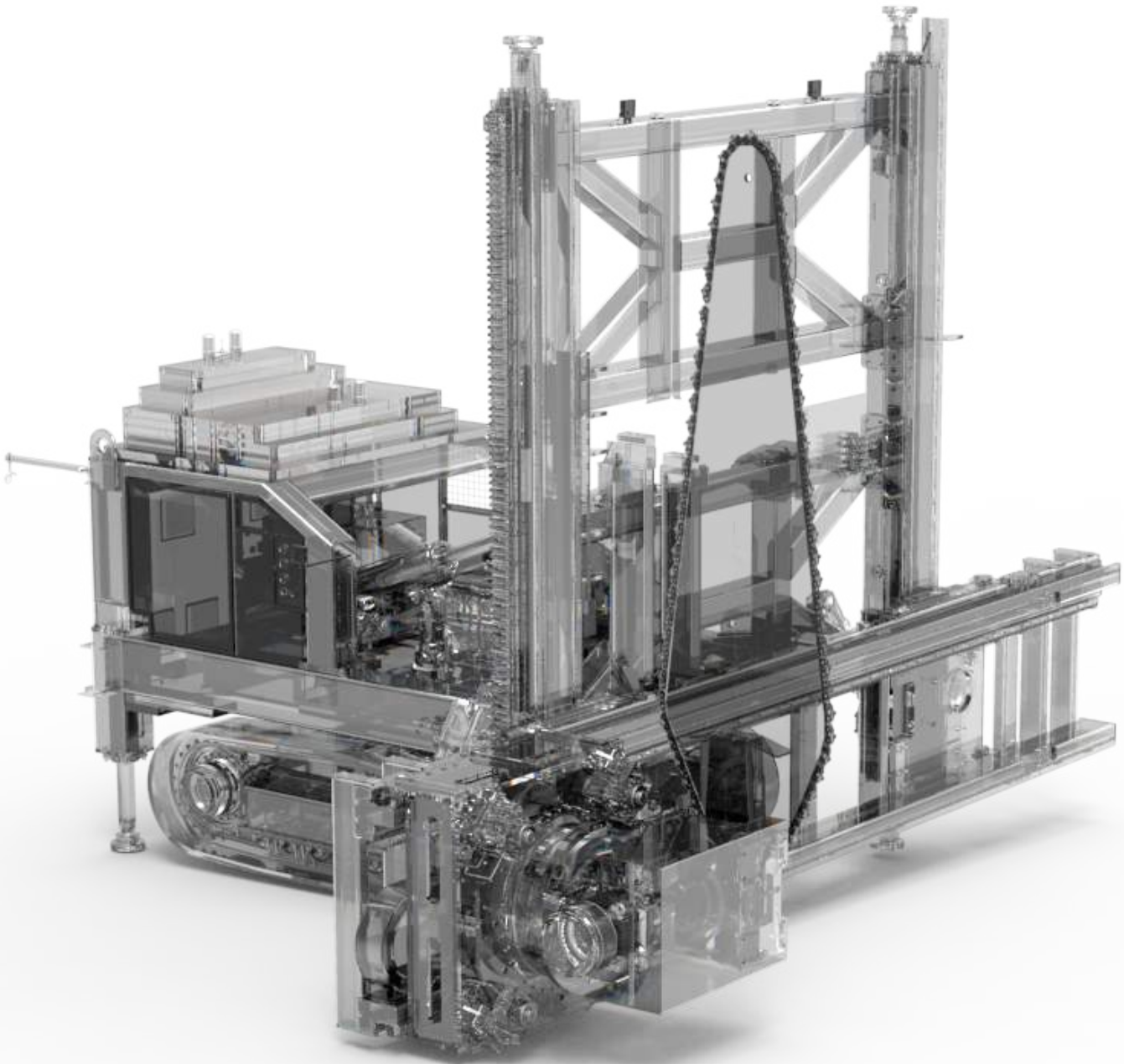


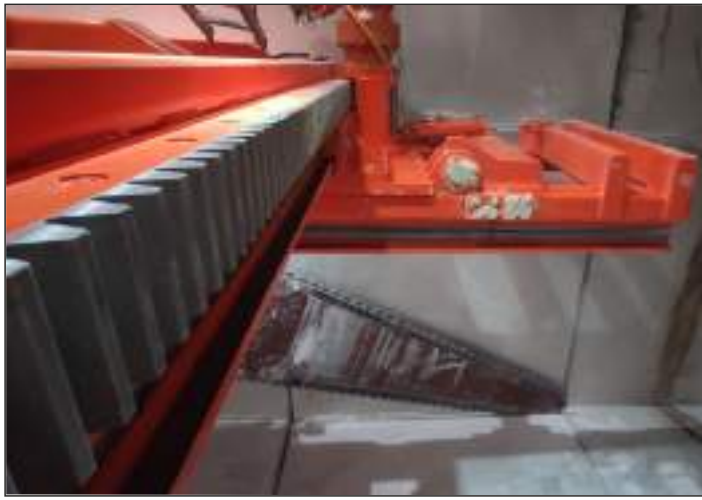
HORIZONTAL CUT CONFIGURATION



ORIGINAL SPARE PARTS

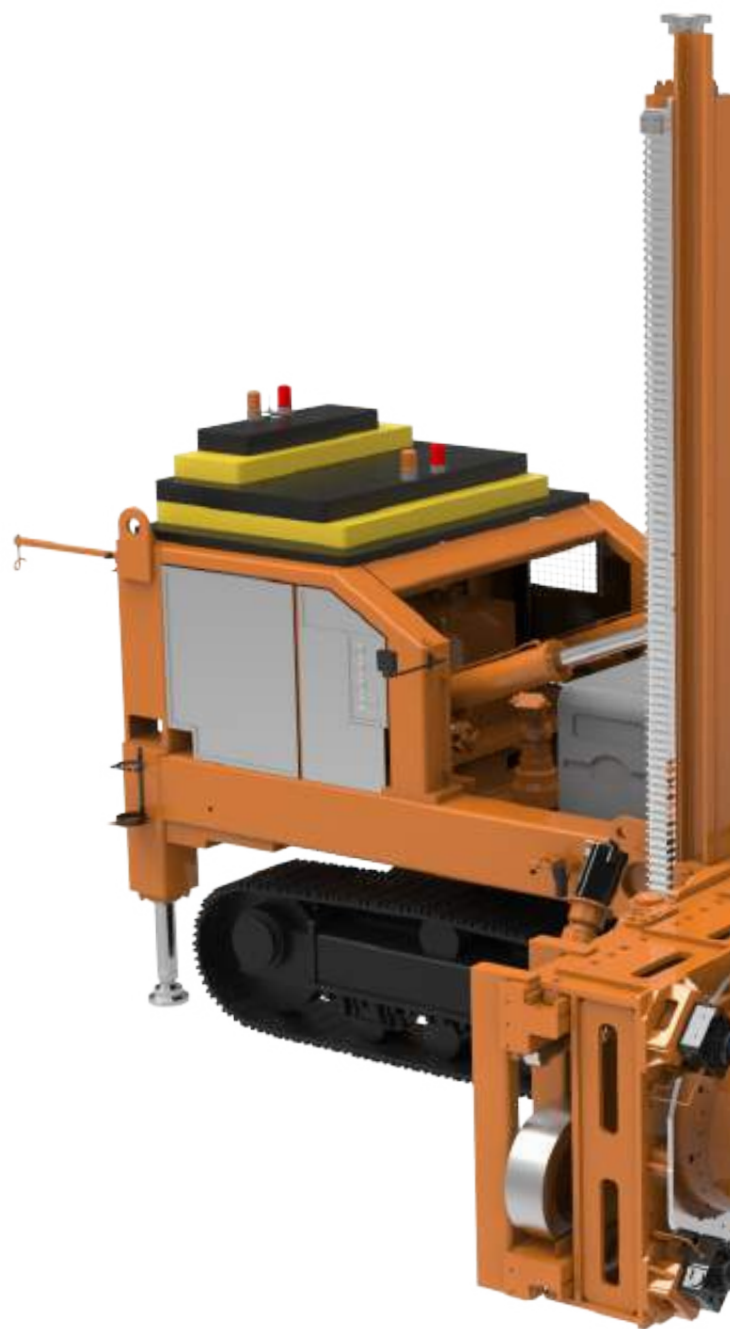
Fantini has been producing chain saw machine for cutting ornamental stone, based on high quality design and manufacturing processes, since 1979. The company has a complete record of the production processes for every single machine it has manufactured and has always selected the best suppliers for the components it uses. Sometimes simply using another brand of component is enough to compromise the efficiency of a machine. Attempting to save money by using cheaper components on high performance equipment such as ours can result in a significant reduction in the efficiency of the machinery. Always purchase original Fantini spare parts in order to get the very best out of your machines, in terms of performance and reliability.





[illegible]

[illegible]



FANTINI SUD S.P.A.

Strada Provinciale 12 n° 52
03012 Anagni (FR)
ITALY

Tel +39 0775.77491 r.a.
Fax +39 0775.769640

info@fantinispaspa.it
www.fantinispaspa.it



WWW.FANTINISPA.IT

REV. 1.0